

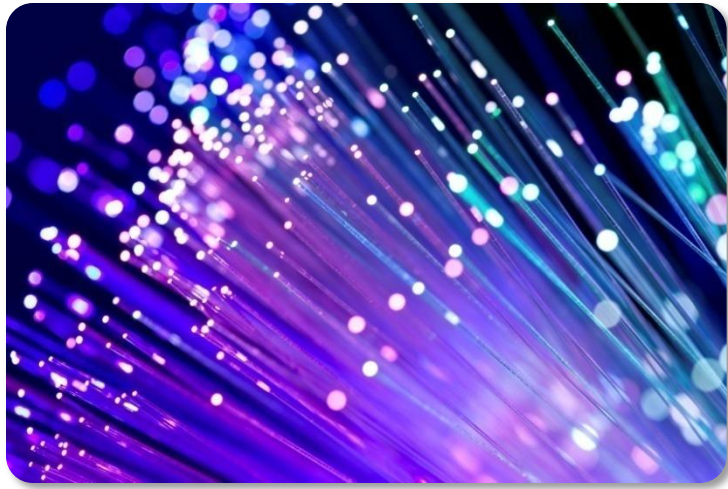


# INVENTORY & PROVISIONING



**SaskTel**   
*International*





## YOUR PROBLEMS

Today's communication industry demands the efficient and optimized delivery of new services in constantly evolving convergent networks. These services must be delivered fast with no fallouts and in the most cost-effective way. However, all too often operators are finding that their own network infrastructures are one of the main barriers to achieving this success, jeopardizing customer retention and acquisition. Service providers unable to offer seamless, instant, and efficient fulfillment are at risk of losing their business to other providers who can.

## OUR SOLUTION

SaskTel International's MARTENS™ inventory and provisioning software allows service providers to overcome industry challenges through completely automated, flow-through provisioning for cable and telecom networks. Identify what resources are available and how they must come together to fulfill the requests of your customers. MARTENS™ enables access to a function-rich and powerful set of features that automate technology, network assignment and provisioning—all while optimizing network capabilities, minimizing errors, and enabling flow-through capabilities.

As your business continuously evolves, gain instant access to an enterprise-wide physical and logical inventory of your services, resources, and networks. The new products you're selling are essential to the success and growth of your organization, and your customers need to be up and running quickly and easily. With MARTENS™ provisioning software, you can now have services provisioned and activated for your customer while they are talking to your customer service representatives.





Central Office	Switch ID	Host Switch ID	Programming Central Office	Programming Host Switch	Switch Type	VLEH Switch	VLEH Exists	Supports OSSG	Remote Exists	Remote Frame
<input type="radio"/> TEST131	VLEN1	VLEN1	TEST131	HOST1	DMS-100	Y	Y	Y		
<input type="radio"/> TESTS03	HOST5	HOST5	TESTS03	HOST5	DMS-100			Y		
<input type="radio"/> TESTS04	D07	D07	TESTS04	D07	OCTEL			Y		
<input type="radio"/> TESTS03	VLEN1	VLEN1	TESTS03	HOST5	DMS-100	Y	Y	Y		
<input type="radio"/> TESTS03	VLEN3	VLEN3	TESTS03	HOST5	DMS-100	Y	Y			
<input type="radio"/> TESTS01	HOST1	HOST1	TESTS01	HOST1	DMS-100			Y		
<input type="radio"/> TEST131	HOST1	HOST1	TEST131	HOST1	DMS-100			Y		
<input type="radio"/> TESTS04	UR1	UR1	TESTS04	UR1	UREACH			Y		
<input type="radio"/> TESTS03	D05	D05	TESTS03	D05	OCTEL			Y		
<input type="radio"/> TESTS02	HOST3	HOST3	TESTS02	HOST3	DMS-100			Y		

## SOLUTION HIGHLIGHTS



**QUALIFICATION MANAGEMENT:** Instantly determine what services and features can be offered, as MARTENS™ ensures that facilities are available, valid, non-defective, and not associated with future pending services.



**NUMBER/IP MANAGEMENT:** Accurately assign and track numbers/IP's, even in competitive environments. Establish relationships between numbers, customers, and classes of service.



**DATA & VOICE CATALOGUE:** Catalogue new and existing products, services, and associated components. Create service components into product specifications and customize service offerings based on business rules.



**FLOW-THROUGH PROVISIONING:** Multiple scenarios are analyzed to provision the most efficient path and equipment for each subscriber to connect facilities.



**AUTOMATED NETWORK TRANSPORT & TECHNOLOGY MANAGER:** Determine the minimum technology required to provision services, find and assign suitable facilities, and provision the transport access path to the IP edge device.



**DATA INTEGRITY:** Thousands of edits cleanse data and prevent costly errors, while a single integrated system ensures consistency among all records.



**CONSOLIDATED INVENTORY:** Gain insight into a complete, accurate, and detailed inventory of physical and logical items.

## WHO WE ARE

Recognized as a global innovator and experienced-backed solution provider, SaskTel International has successfully enabled international clients to develop, enhance, and expand their business operations for over 25 years. From leading-edge software solutions to professional consulting and project management services, SaskTel International assists businesses globally in achieving their strategic business goals and objectives.

## PROFESSIONAL CONSULTING

SaskTel International's work doesn't end with the product. We can also assist you with implementing and deploying the product, help you integrate it into your existing infrastructure, and provide expert consulting, ongoing support and training.

## CONTACT US

### **SaskTel International Head Office**

2550 Sandra Schmirler Way  
Regina, SK, Canada S4P 3Y2  
1.877.242.9950



[www.sasktelinternational.com](http://www.sasktelinternational.com)

